

# Cloud LIMS...Is it the right choice for my laboratory?

Presented by: Jeanné Mensingh

**LIMScribe™**

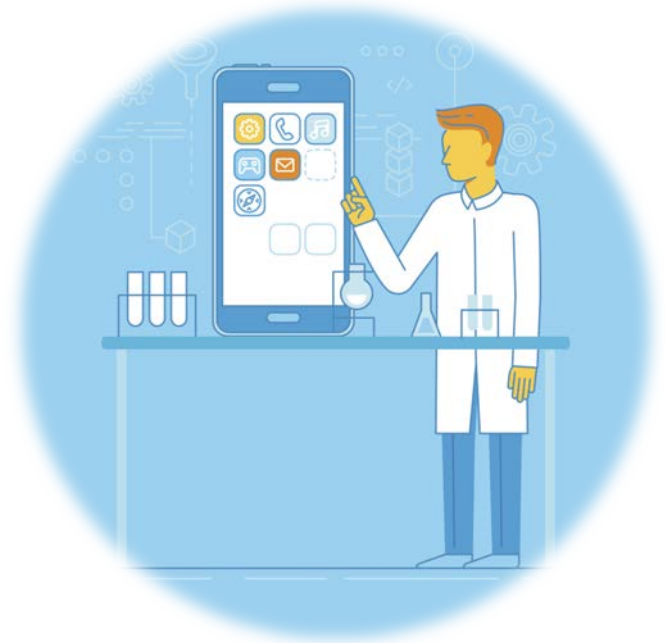


# Presenter – Jeanné Mensingh

- CEO and Co-Founder of Labtopia
- 30+ years experience in the laboratory and management
- B.S. degree in Chemistry
- Positions Held (Plant, Commercial Laboratory, Environmental, Pharmaceutical)
  - Analytical Chemist
  - QC Supervisor
  - QS Manager
  - Project Manager
- Certificated Lead ISO 9001 Auditor (13485 and 17025), ASQ CHA, ASQ CQA, ASQ CSQE, Lean Certification, Lead Assessor (TNI, DoD QSM, EPA)
- **Implemented over ten (10) different LIMS solutions**

# Overview

- What is a Cloud LIMS?
- Requirements
- IT Support
- Onsite or Offsite Solution
- Security and Data Integrity
- Named versus Concurrent User
- System Integration
- Summary



# The Cloud LIMS

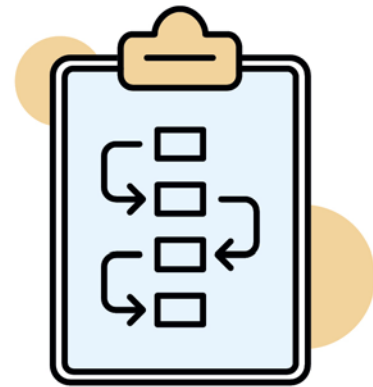
- There are several terms used for LIMS when provided as a SaaS (Software As A Service):
  - Cloud
  - Hosted
  - On-Demand
  - Subscription
- For this presentation, they will be used in the same context.

# Cloud LIMS

- Key Features of Cloud LIMS:
  - A subscription service with LIMS located on the provider's server(s)
  - Hosted on a provider's server(s) with a Monthly Fee
  - Set-up and Monthly Fee
  - Alternative to ownership of licenses
  - No onsite hardware/software support
  - Feature rich LIMS at a fraction of the cost – no capital cost

# Requirements

- Searching for the Right LIMS
  - Requirements (most important)
    - *Investigation*
    - *Demonstration*
    - *Implementation*
  - Applicability
  - Integration
  - Uptime and Availability! This is very important!
  - Cost



PLANNING

# IT Support

- Systems Infrastructure
  - Hardware, Software
- Type of Support (24/7)
- Business Continuity
  - Offsite Backup and Data Recovery
- Proactive System Security
  - Firewall, Virus, Encryption



# Onsite versus Offsite

- LIMS Accessibility
- Response Time (Lag)
- Data Accessibility
- Control
- Back-up/Disaster Recovery





# Security and Data Integrity

- What type of security?
- Managed Server versus Multi-Tenanted?
- Audited datacenter?
  - SSAE-16/SAS 70
  - Third Party Auditing
- Data Leakage
- Encryption



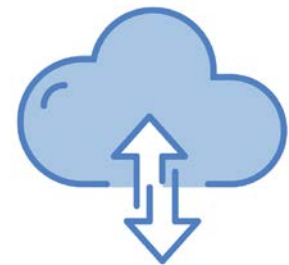
# Named versus Concurrent

- How is access provided?
  - RDP/VPN
  - Web
  - Citrix
- Impact on cost



# System Integration

- Can you integrate?
  - Instruments
  - Systems? (Enterprise Inventory Management, Data Historian, Process Software, Etc.)
- How will the data pass to the LIMS?



# Summary

Overall the reasons for choosing Cloud versus Client Site:

- Faster deployment – no server/database set-up
- Efficiency – no reliance on internal IT support
- Minimal Capital Cost
- Lower TCO (Total Cost of Ownership)

**Is this the right solution for your lab?**